

WASTEWATER TREATMENT PLANT SHORT AND LONG TERM INITIATIVES

- ADMINISTRATIVE BUILDING RENOVATIONS
- SLUDGE DEWATERING AND DISPOSAL
- DIGESTER OPTIMIZATION
- ELECTRICAL TRANSFORMER RELOCATION
- FLOOD PROOFING ELECTRICAL & MECHANICAL EQUIPMENT
- AESTHETIC IMPROVEMENTS

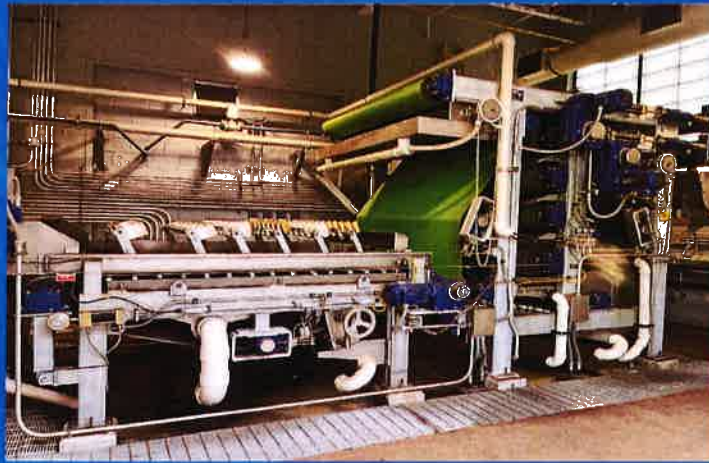
ADMINISTRATIVE BUILDING RENOVATIONS

- DESIGN COMPLETE
- OBTAINING PRICING
- ESTIMATED START DATE – SEPTEMBER 2023
- ESTIMATED COMPLETION DATE – DECEMBER 2023



SLUDGE DEWATERING AND DISPOSAL

- GOAL IS TO ACHIEVE 20% SOLIDS CONSISTENTLY
- MAXIMIZE LAND APPLICATION AND MINIMIZE LANDFILL DISPOSAL
- ACHIEVE LONG-TERM REDUCTION IN COST OF SLUDGE DISPOSAL
- ONGOING INVESTIGATION



DIGESTER OPTIMIZATION

- GOAL IS TO MAXIMIZE USE OF PLANT DIGESTERS (4)
- DEVELOP AN ENERGY RECOVERY STRATEGY AND IMPLEMENTATION PLAN
- THREE PHASE STUDY
- FIRST PHASE (\$8,000) ON HOLD



ELECTRICAL TRANSFORMER RELOCATION

- DESIGN STAGE (AUGUST 2023) – CHOOSE SITE POSITION
- APPLICATION APPROVED AWAITING DESIGN
- CONTRACTOR SITE VISIT
- OBTAIN PRICING



FLOOD PROOFING ELECTRICAL & MECHANICAL EQUIPMENT

- RELOCATE ELECTRICAL EQUIPMENT
- REPLACE EXISTING RETURN ACTIVATED SLUDGE PUMPS WITH SUBMERSIBLE PUMPS
- APPLICATION FOR STATE H2O PROGRAM SUBMITTED AND UNDER REVIEW
- LOCAL SHARE \$468,000 (AVAILABLE FUNDS IN CAPITAL ACCOUNT)



AESTHETIC IMPROVEMENTS

- FENCING FOR FRONT OF PLANT TO SHIELD VIEW
- ROAD PAVING FOR REAR OF PLANT
- LONG TERM APPROACH AS FUNDS BECOME AVAILABLE

